



2009 Azimut

65' 62E - Serendipity

\$799,000 USD
€690,454 Euros \$994,155 CAD

- Power - Used - Motor Yachts
- Diesel Fuel
- Fiberglass Hull
- Fort Lauderdale Florida United States

🚩 Flag of Registry: United States

🚩 Port of Registry: Columbia, MO

Vessel ID# 2783684

Description

Read any review of the 62 Azimut, and you'll find similar, fawning praise. This legendary model has been lauded for its "undoubted stylishness", "unabashed luxury", "practical layout", and "seaworthy cruisability". Boats.com goes so far as to present the 62 Azimut as a

natural evolution in Italy's long design tradition, following in the footsteps of none other than Leonardo da Vinci and Michelangelo. Frankly, we couldn't have said it better ourselves.

"Serendipity" lives up to the 62 Azimut hype. Here's why:

- She's Extremely Clean - Her Captain Makes Sure of That!
- September 2021 Yard Period - Bottom Paint, Prop Speed, Full Compound & Wax
- Updated Garmin Electronics (Including Multiple GPSMap 7612/7608 Displays)
- Well-Maintained Caterpillar C-18 Engines with Low Hours (less than 1100!)
- Flybridge Re-Decked in Flexiteek (Sand-able Material with a 5 Year Warranty) - May 2021
- State-of-the-Art Fusion Stereo System Throughout the Yacht - September 2021
- Performance - Serendipity Cruises at 28 Knots, Topping Out Near 35 Knots
- Textbook Maintenance on Major Items (i.e. Main Engines) and More Modest Ones Too
- Recent A/C Servicing (Ice Cold Even in August!) - May 2021
- Bells & Whistles, Like a Yacht Controller, FLIR Thermal Camera System, and More!
- Crew Quarters with Two Berths - Perfect Bahamas Set-Up
- Easy-to-See at the Fort Lauderdale International Boat Show!

Priced at just \$799,000, this 2009 62' Azimut Evolution is hitting the market at an extremely compelling price and, in all likelihood, will not make it through the **Fort Lauderdale International Boat Show**, where she'll be on display, without being snatched up. Kudos to whoever pulls the trigger first. Your taste is impeccable.

Data Sheet

Category: Motor Yachts
Type: Power - Used
Year: 2009
Beam: 16' 7"
LOA: 65' " (19.81 meters)
LWL: 53' 8"
Draft Max: 4' 11"
Cabins: 3
Sleeps: 6
Twin Berths: 2
Double Berths: 1
Queen Berths: 1
Heads: 3

Crew Cabins: 1
Crew Sleeps: 2
Maximum Speed: 33.5 Knots
Cruise Speed: 28.5 Knots
Range NM: 400
Fuel Type: Diesel
Super Structure Material: Fiberglass
Hull Material: Fiberglass
Hull Shape: Deep Vee
Hull Finish: White
Hull Warranty: None

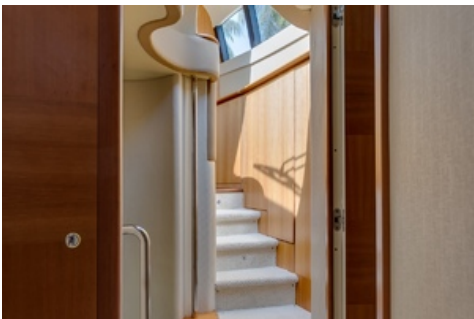
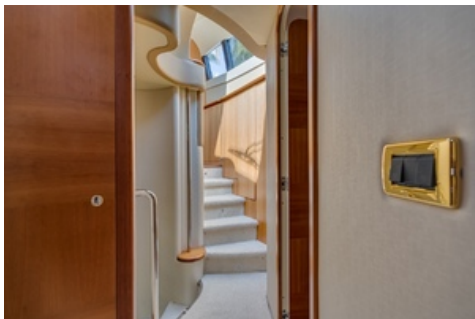
Fresh Water: 265 Gallons (1003.13 Liters)
Holding Tank: 92.5 Gallons (350.15 Liters)
HIN/IMO: XAX62180E809

Featured Images

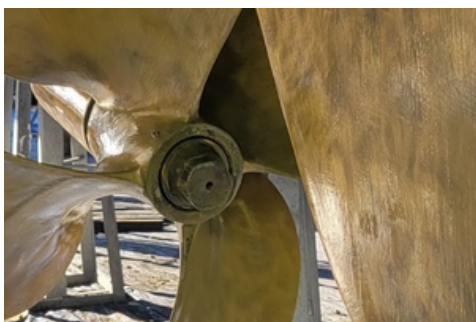
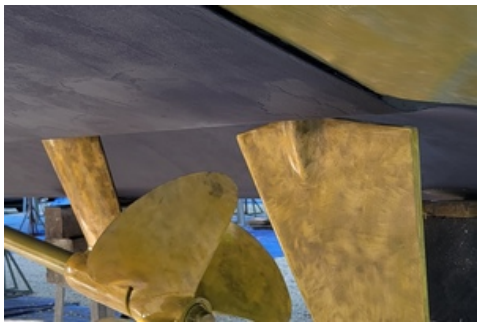
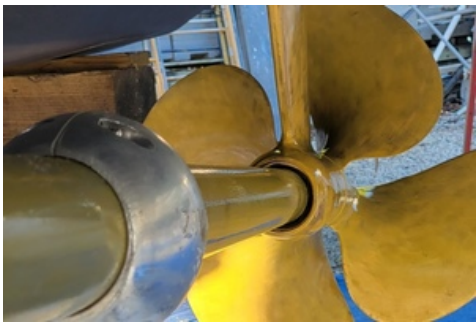
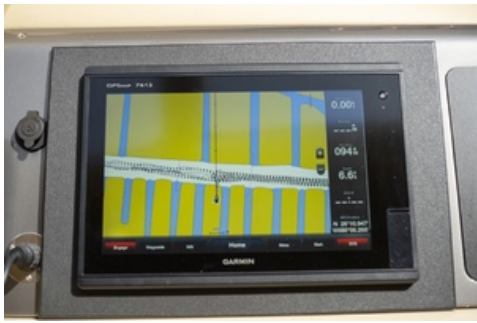












Engines

Engine 1

- Engine Make: Caterpillar
- Engine Model: C-18
- Serial #: CKH03019
- Engine Year: 2007
- Engine Type: Inboard
- Drive: Direct
- Power HP: 1015.00
- Power KW: 0.00
- Fuel Type: Diesel
- Engine Hours: 1069.00
- Hours Date: 10-13-2021
- Engine Location: Port

Engine 2

- Engine Make: Caterpillar
- Engine Model: C-18
- Serial #: CKH03021
- Engine Year: 2007
- Engine Type: Inboard
- Drive: Direct
- Power HP: 1015.00
- Power KW: 0.00
- Fuel Type: Diesel
- Engine Hours: 1066.00
- Hours Date: 10-13-2021
- Engine Location: Starboard

Generators

Generator 1

- Generator Make: Kohler
- Generator KW: 20.00
- Generator RPM: 0.00
- Generator Hours: 1156.00

Full Details

Accommodations

Immediately upon entering the main salon through an impressive set of curved glass doors, one is greeted by a large leather-covered seating area, with an accompanying coffee table, to port. This area is perfectly located directly across from the yacht's entertainment center. While many guests will reflexively reach for the remote and kick back to watch a favorite movie, this would be a bit premature - there's still way too much to see in "Serendipity". That said, given the yacht's high-ceilings, one would be forgiven for thinking they were in an actual movie theater.

Moving forward, there is a galley to port and a dinette to starboard. The dinette, comprised of two adjoining custom tables and seating for five, is so inviting, and utterly lacking in pretension, that it would be easy to regard this area merely as an area for a casual breakfast or lunch. This would be a mistake. When it is set up for formal dining, the dinette rivals anywhere else on the yacht - even the vaunted aft deck - as a "go to" spot for dinner. Now whether that night-time meal is at a "white glove" level or decidedly more informal is completely up to you.

The galley, found directly across from the dinette, is fully equipped and more than capable of churning out delicious meal after delicious meal for any & all guests on board. The customized glassware and dishes storage is masterfully arranged - allowing the galley to be fully-stocked at all times, without necessarily looking like it. And particularly when there is a "full house" on board, the full-sized refrigerator will come in handy.

The lower helm station is centered in the middle of the pilot house and just forward of both the dinette and galley. The electronics and other instrumentation are thoughtfully arranged, and will bring a knowing, appreciative smile from both professional captains and owner/operators alike (and that's even before he or she gets acquainted with all of the top-of-the-line Garmin electronics). The plush, leather-covered captain's chair is so comfortable that any driver of the yacht would be forgiven for taking command exclusively from the lower helm - even when it's 75 degrees and sunny and the flybridge helm station beckons.

Moving down below deck, a visitor to "Serendipity" is greeted by one of the highlights of the yacht - its extraordinary guest quarters. But first, before any staterooms are inspected, one is treated to a suede-lined hallway with conveniently located washer & dryer units. Midship you will find independent access to the full-beam Master stateroom, allowing for maximum space and a private suite. The Master is notable for a

number of reasons - yes, of course, its impossible large size, but also its gorgeous cherry wood accents, abundant natural light, amply-sized ensuite bathroom (which boasts a top-of-the-line head system), and large walk-in closet.

Moving back to the hallway, there is an oversized day head on the port side; opposite the day head is a twin guest room with side-by-side berths. Some owners may wish to convert the this guest room into one with a double bed, and this can be done quite easily. The spacious forward VIP has an ensuite bath and a walk-in closet, which is almost unheard of in this class and provides for more than ample storage.

Main Salon

- Fusion Sound System (WiFi & SiriusXM-enabled) with Mounted Fusion Speakers (4)
- Newly Installed Flooring
- Large Seating Area Upholstered in Fine Italian Leather
- Coffee Table
- Entertainment Center with Retractable 41" Flat-Screen Samsung TV
- Dimmer Switches
- Raritan Ice Maker
- Thrane & Thrane Satellite Phone (Mounted on Starboard Side)
- Multiple Storage Cabinets & Drawers

Master Stateroom

- Double Bed with Drawer Unit
- Double-door Mirrored Wardrobe
- Column Unit with Drawers
- Built-in Vanity Unit with Drawers
- Oversized Ottoman
- Large-sized Oval Portholes (300 x 600 mm)
- Emergency Exit via Ceiling Above Vanity Unit
- Cherry Wood Doors & Frames
- Ensuite Bathroom

Master Head

- Tecma Freshwater Flush Head
- Wooden Floor
- Shower with Glass Door
- Cherry Wood Cupboards
- Oversized Mirror

VIP Stateroom

- Center Line Double Bed
- 24" LG Flat Screen Television
- Shelves Above Portholes
- Walk-in Closet with Hanging Rail and Shelves
- Two Round Portholes
- Deck Hatch with Shade and Mosquito Screen
- Curtains, Upholstery and Carpet
- Azimut Reading Lights
- Ensuite Bathroom

Guest Cabin

- Twin Beds
- 24" Flat-screen Samsung TV
- Bedside Table and Switches
- Azimut Reading Lights
- Wardrobe with Drawers and Shelves
- Curtains, Carpet and Upholstery
- Round Porthole
- Day Head is Accessible in Companionway

Galley

- Schott Ceran Stove Top with Four Burners
- GE Microwave
- Two Stainless Steel Sinks Securely Mounted in Granulon Countertop.
- Waeco Freezer & Refrigerator
- Storage Cabinets Under Worktop with Pullout Stainless Steel Baskets
- Hanging Cherry Wood Units
- Storage for Pots & Pans Under Microwave Oven
- Storeroom, Service Compartments, Tableware, Cutlery, and Glassware Storage Cabinet

Companionway

- Day Head with full shower
- Tecma Vacu Flush Toilet
- GE Washer. & Dryer Stacked Units
- Central Vacuum System Outlet

Flybridge

- Aluminum hinged Plexiglas hatch
- Bimini Top (Retractable)
- Searchlight Controls
- Full Upper Helm (Details Under "Upper Helm" Section)
- Large Settee with Table (Seating for 8 - Perfect for Al Fresco Dining!)
- BBQ, Refrigerator & Sink
- Fusion Flush Mount Speakers (2)
- Wooden Chaise Lounges (2)
- Eisenglass Enclosure

Aft Deck

- Fusion MS-NRX300 Wired Remote Control
- Underwater Lights / Batteries / Fire Suppression System Controls Station
- Wooden Table with High-Gloss Wood Finish
- Settee & Two Wooden Deck Chairs (Seating for 6)
- Teak Decks (in great shape!)
- Multiple Storage Cabinets
- Cabinet with Washdown Hose
- Ceiling-mounted 32" Samsung Flat Screen Television

Lower Helm & Electronics

- Garmin GPSMap 7612 Multi-Functional Display (Two Units) - Radar, Chartplotter, Autopilot, Sonar, and A/V Controls & Gauges (Fusion Entertainment System)
- Garmin GHC 20 Marine Autopilot Helm Control
- Raymarine ST 6002 Chain Counter
- ZF Electronic Controls
- Garmin XHD2 Antenna - 72 nm Radar with 4' Span
- Port & Starboard Caterpillar Display
- Side-Power Bow & Stern Thruster Controls
- FLIR System
- Yacht Controller
- Ritchie Compass
- ITT Jabsco Searchlight
- Sea-Fire Engine Shutdown Override System Control
- Hexaust System (Loss of Cooling Water Alarm)
- ICOM IC-M37 VHF Marine Portable Radio
- ICOM Submersible Plus Commandmic III VHF Radio
- Raymarine Mounted VHF Speaker
- VDO Display Gauges (Tachometer with Hour Meter, Oil Pressure, Water Temperature, Transmission Oil Temperature)
- Garmin Cameras - Feed from Engine Room & Aft Deck Displayed on Garmin GPSMap 7612 Multi-Functional Display

Upper Helm

- Garmin GPSMap 7612 Multi-Functional Display - Radar, Autopilot, Sonar, and A/V Controls & Gauges (Fusion Entertainment System)
- Garmin GPSMap 7608 Marine GPS Chartplotter
- Garmin GHC 20 Marine Autopilot Helm Control
- ZF Electronic Controls
- Port & Starboard Caterpillar Display
- Danforth 5" Constellation Compass
- Quick CHC1202M Windlass Control Panel w/Chain Counter
- Side-Power Bow & Stern Thrusters
- Flir System Controls
- ITT Jabsco Searchlight Controls
- VDO Display Gauges (Tachometer with Hour Meter, Oil Pressure, Water Temperature, Transmission Oil Temperature)
- Trim Tab Display Gauge
- Yacht Controller On/Off Switch
- Sea-Fire Engine Shutdown Override System Control
- Garmin Mounted VHF Speaker
- Garmin GHS 10 Wired VHF Handset
- Fusion MS-NRX300 Wired Remote Control
- Convex 12V socket

Deck Equipment

- Lofrans Captstan Vertical Windlass with Foot Controls
- Opacmare Passarelle & Davit with 400Kg Capacity (with Remote Control)
- One Anchor
- Swim Ladder
- Navigation Lights
- Bow Pulpit & Rails
- Windshield Washers and Wipers
- Freshwater Deck Washdown System
- Electric Search Light with Remote Controls
- Two Electric Winches on Aft Deck
- Electric Winches
- Fuel & Freshwater Intake
- 50 AMP Shore Power Connection

Safety Equipment

- ACR EPIRB on Flybridge (August 2021)
- Sea-Fire Automatic/Manual Fire Suppression (Model FD 123-140) in Engine Room
- Seachoice Life Vests (12)
- Think Safe Type IV PDF (2)
- West Marine 50ft. Throw Rope
- Carbone Monoxide Detectors (4)
- Kidde Handheld Fire Extinguishers (6)

Engine Room & Mechanical

- 2 x Caterpillar C-18 Engines (Port - 1,069 Hours / Starboard - 1,066 Hours)
- Twin Disc Marine Transmission with EC050 Electronic Control Module
- 20Kw Kohler Generator (220 / 240 Volt) - 1,156 Hours (as of 10/12/2021)
- Cruisair 36,000 BTU Condensing Unit (FX36C3-P-417)
- Cruisair 48,000 BTU Condensing Unit (RX48UC-417)
- Caterpillar Controls, Model 197-8832 (Port & Starboard)
- ZF MicroCommander Controls - 785CE - Cruise Command Processor (Port & Starboard)
- Siemens Logo Control System (Model 230ORCo)
- Side-Power Bow & Stern Thruster Automatic Main Switches
- Racor 500 Fuel Filtration & Water Separation System

Electrical

- 20Kw Kohler Generator (220 / 240 Volt) - 1,156 Hours (as of 10/12/2021)
- Dolphin Battery Charging System (2)
- Optima D31M 12V Marine Battery (6 House Batteries, 1 Generator Battery, 6 Main Engine Starting Batteries)
- Engine-mounted Alternator
- Glendenning 240 Volt / 50 AMP Retractable Cord
- Secondary Marinco "Slave" 240 Volt / 50 AMP Inlet

A/V & Entertainment

- KVH TracVision HD7 Satellite Receiver
- Fusion Sound System - Top-of-the-Line and Newly Installed!
- Flat-Screen Samsung Televisions (3) and LG Television (1)
- Sony Receiver (VIP Stateroom)

Crew Quarters

- Two Berths
- Head with Shower
- Accessible Off Swim Platform
- A/C with Thermostat

Disclaimer

The company offers the details of this vessel in good faith but cannot guarantee or warrant the accuracy of this information nor warrant the condition of the vessel. A buyer should instruct his agents, or his surveyors, to investigate such details as the buyer desires validated. This vessel is offered subject to prior sale, price change or withdrawal without notice.

CONTACT BROKER



26 North Yachts

2525 Marina Bay Drive West
Suite 203A
Fort Lauderdale FL 33312 USA
Phone: 1-954-900-9988
Fax: 1-954-206-3075
<https://www.26northyachts.com>



Will Snyder

Yacht Sales

520 West Ave
Miami Beach FL 33139 USA
Office: 1-954-900-9988
Cell: 1-954-235-3468
Email: will@26northyachts.com



© 2021 International Yacht Brokers Association - Will Snyder, Active Member - Vessel ID: 2783684